



Leading Edge

Protecting Your Business for a More Sustainable Future

HOTSHOT & SAME DAY
Local Deliveries available for orders
placed by 2 p.m. EASTERN TIME

MARCH 2025 | WWW.USIGROUPS.COM



We can swiftly and effectively diagnosing problems and provide workable solutions. **USI TRAINING**

Staying ahead in the rapidly changing field of coating and corrosion protection technologies requires not just utilizing the best materials but also comprehending their complete range of uses, advantages, and potential. **At Unconventional Solutions**, we think it's important to **give our customers the information and abilities they need to make the most of our cutting-edge solutions.**



Our staff offers a multitude of expertise and experience to any project, regardless of its size or type. Our expertise lies in offering inventive resolutions for the most complex corrosion and coating problems. Our strategy goes beyond simply providing items; it also involves providing specialized assistance based on your particular requirements and project objectives.

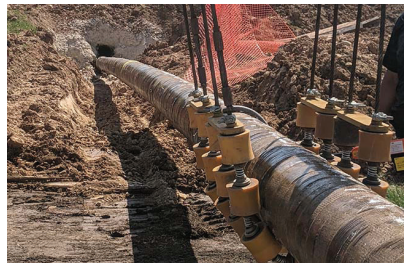


How We Can Assist With Troubleshooting: Our professionals can assist in swiftly and effectively diagnosing problems and providing workable solutions to restart your project.

Product Selection: Selecting the best corrosion protection and coating product might be difficult due to the large variety available. We'll help you navigate our product lineup to identify the ideal fit for your needs.

Long-Term Protection Strategies:

Are you considering long-term durability instead of just quick repairs? Together, we'll create plans that safeguard and prolong the life of your assets.



We inviting you and your team to schedule a product training session today!

DATES TO REMEMBER

March 6 — Great lakes AMPP (Ann Arbor, MI)

March 11-12 — 17th Annual KGA EXPO (Lexington, KY)

March 13 — Western Pennsylvania Corrosion Committee (WPCCC) Vendor Day (Delmont, PA)

March 20-21 — 2025 OGA Technical Seminar & Affiliate Display (Lewis Center, OH)

April 6-10 — AMPP Annual Conference + Expo (Nashville, TN)

April 15-17 — Great Lakes AMPP + Skeet Shooting (Grand Rapids, MI)

May 13-15 — AUCSC Appalachian Underground Corrosion Short Course (Morgantown, WV)

May 22 — Great Lakes AMPP (Grand Rapids, MI)

MI HQ - 28056 Oakland Oaks Ct., Wixom, MI 48393
HQ: 248-735-7000 | OH: 937-704-4220 | IN: 219-733-0543
office@USIgroups.com | www.USIGroups.com



End of Winter SALE

3M™ 323+ Scotchkote – 450ML Cartridges
3M™ 323+ Scotchkote Liquid Epoxy Coating is the latest innovation in Liquid Epoxy Coatings from 3M. This two-part system features

improved adhesion, flexibility and impact resistance to help prevent corrosion on steel pipes and other metal surfaces.



Denso Protal 7200 Brush Grade

is a VOC free, 100% solids, 2 part epoxy coating specially formulated to compliment FBE coated pipe. It is a high build liquid coating that is brush or spray applied (referred to as Denso Protal 7250 in Canada) in one coat in the field or shop. It cures very fast to allow quick handling and backfill times.



Denso Protal 7125 Brush Grade

Denso Protal 7125 is specifically formulated to be applied to colder substrates at colder ambient temperatures. It is a high build liquid coating that is brush or spray applied in one coat to many areas of in-service pipelines or during pipeline construction in the field. It cures fast to allow quick handling and backfilling, even down to -4°F (-20°C). Denso Protal 7125 is intended for use where a quick cure is required at lower substrate and/or ambient conditions such as during winter applications or on colder operating temperature pipelines.



SPC (Specialty Polymer Coatings) SP 2888 RG Brush Grade

SP-2888 R.G. is an epoxy/polyurethane Hybrid coating based on State of the Art epoxy/urethane chemistry. The synergistic effect of co-polymerizing epoxy and polyurethane produces a coating with the superior adhesion and corrosion resistance of an epoxy along with the added toughness of a polyurethane.



Unconventional Solutions, Inc.
Repair - Protect - Upgrade

